



V-MAX

Motorcyclemods Part No. VMX 01

WWW.MOTORCYCLEMODS.COM MOTORCYCLEMODS LLC. ALL RIGHTS RESERVED.

REFERENCE INSTRUCTIONS FOR TAILLIGHT BRACKET MODIFICATION, FOR YAMAHA VMAX
Please read through the entire reference instructions and Terms and Conditions before proceeding with the installation. [This document consists of 2 pages.]

Terms and Conditions:*

RETURN POLICY: Requests for returns must be made within 15 days of date of delivery. Please inspect the order upon arrival and notify MOTORCYCLEMODS LLC immediately about missing or damaged parts. Damaged parts must be returned to receive a replacement. If returning for a refund, ordered items must be in unused condition, without evidence of trial fitment, or any other modification. Return requests must be in writing. Email requests to sales@motorcyclemods.com. If product is purchased from a 3rd party reseller, contact the reseller for returns; technical questions and like product exchange will be handled by Motorcyclemods LLC.

WARRANTY AND LIMITATION OF LIABILITY: MOTORCYCLEMODS LLC EXPRESSLY DISCLAIMS ALL EXPRESS OR IMPLIED WARRANTIES, INCLUDING THE WARRANTY OF MERCHANTABILITY AND FITNESS FOR A PARTICULAR PURPOSE. MOTORCYCLEMODS LLC's and it's member/s' liability for any claim arising from or relating to the Goods is limited to the purchaser price of the Goods (contents of the package), provided Purchaser returned the Goods or the repair or replacement of the Goods or parts thereof at the election of MOTORCYCLEMODS LLC. In no event shall MOTORCYCLEMODS LLC or its member/s be liable for any direct, indirect, punitive, incidental, special, consequential damages, or any damages whatsoever arising out of or connected with the use or misuse of this Product. MOTORCYCLEMODS LLC or its member/s shall not have any obligation with respect to the Product or any part thereof, whether based on contract, tort, and strict liability or otherwise. BUYER AS WELL AS END-USER ASSUMES ALL RISK AND LIABILITY FROM USE OF PRODUCT. It is the buyer's responsibility to convey the same to end-user, or new vehicle owner, in case of vehicle sale.

General Notice:

The taillight modification bracket and taillight are provided for use purely as an aesthetic appearance alternative to Original Equipment taillight as factory-installed with the vehicle. Use of this bracket is not intended to improve factory installed equipment performance.

[*Terms and Conditions subject to change without notice; see www.motorcyclemods.com for detailed terms and conditions]

Parts included:

- main bracket [REMOVE PROTECTIVE FILM; residue, if any, may be wiped off with solvent]
- LED Taillight [Oblong, Speed Wedge, or other], with 3 wire leads
- fasteners: (2) ¼" x 20 socket head bolts, matching nuts

Rear fender dis-assembly/modification

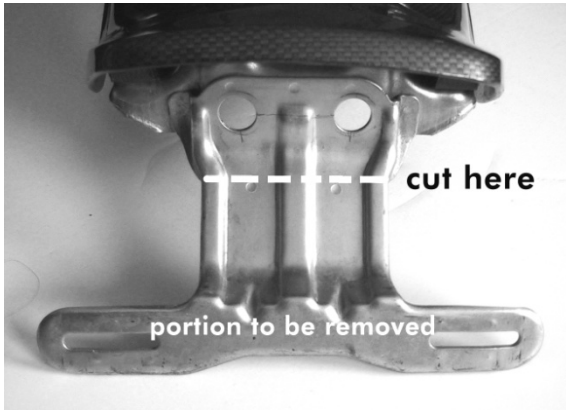
- **remove rear fender assembly, including taillight disconnect, as per service manual**
- to do so, remove rear seat, disconnect the rear taillight wires, and unbolt fender bolts (3) till rear fender and subframe are free; gently take them out of the frame
- separate the taillight unit, plastic support bracket, fender and metal fender sub-frame
- measure 3.25" from the lowest edge of the license plate holder tabs, and draw a line parallel to the edge
- cut-off the lower portion using a metal hacksaw blade in its proper holder; ensure stable surface before cutting*; this step is non-reversible; the modification to the subframe is permanent
- remove cut-edge burrs with a file

Bracket Installation:

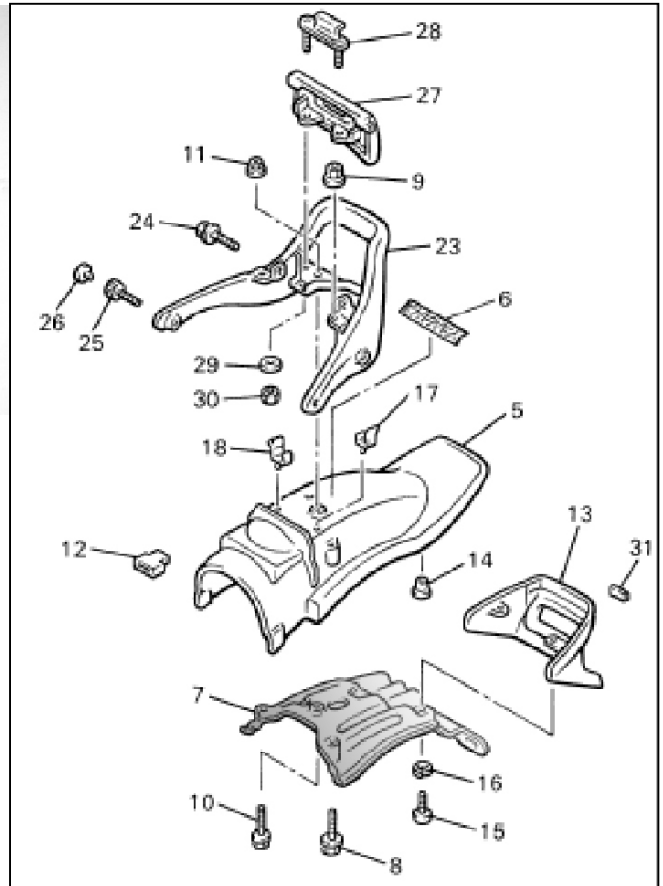
- position taillight on polished side of new bent bracket, and fasten the mounting bolts through the slots; **DO NOT OVER-TIGHTEN, AS THIS MAY LEAD TO A CRACKED TAILLIGHT HOUSING !!!** use medium-strength thread locker (Loctite, Permatex) on the taillight bolts.
- position the new bracket with taillight so that the small holes under the taillight on the new bracket are towards the lower edge of the existing circular holes on the metal subframe; this is crucial to allow reuse of stock screws to reposition fiber fender on subframe.

- use the supplied large washers on the backside of the metal subframe, and install the nylock locknuts; tighten gradually, all the while making sure to keep the assembly centered and toward the lower edge on the subframe
- before reinstalling fender, pass wire pigtails through appropriate stay tabs and hole in fender; extensions to wire leads may be necessary; an easy option would be to splice existing wires with connectors from the stock taillight to corresponding wires, to allow easy re-connection.
- tighten the bracket mounting nylock nuts until moderately tight; the nylock washers will prevent loosening; DO NOT OVER-TIGHTEN, AS THIS MAY PUT GENERATE PRESSURE ON THE TAILLIGHT BOLT STEMS ABOVE.

Fender support – part#7 in reference diagram >>



see www.motorcyclmods.com for more pictures



Wiring Key: (Taillight to existing)

- Black to Ground (stock black)
- Green to Running Lamp circuit (stock blue)
- Red to Brake lamp circuit (stock yellow)

Troubleshooting, if blowing fuses after installation:

- Perform a taillight only connection check, prior to re-installing the complete assembly. If fuses short, check to make sure wires aren't snagged or pinched, and are clear of the fender mounting bolts. And finally, always perform a pre-ride check as outlined in your owners' manual! Ride Safe. Comments ? Email us at SALES@MOTORCYCLEMODS.com with your thoughts, suggestions.

SPECIAL HANDLING INSTRUCTIONS:

- LED CIRCUIT BOARD WIRES ARE FRAGILE; DO NOT PULL THE WIRES, OR HANDLE THE TAILLIGHT WITH WIRES
- MAIN BRACKET EDGES MAY BE KEEN; USE CAUTION WHILE HANDLING; HANDGLOVES RECOMMENDED.

Copyright © 2008. MOTORCYCLEMODS LLC. All Rights Reserved.